

DE 3620

Common Issues

DE Going Back in Pool

Possible Causes

1. Broken/Torn Filter Elements
2. Cracked Top Manifold

Solutions

1. Replace damaged elements #19 and/or #20
2. Replace Top Manifold #13

Filter Pressure Stays High Even After Backwashing

Possible Causes

1. Pool Water Quality/Green Pool
2. Chemicals Unbalanced
3. Oils embedded in fibers of filter elements
4. Too Much DE Powder added
5. Broken Pressure Gauge

Solutions

1. Balance Chemicals and Kill all Algae. Backwash as often as needed.
2. Balance Chemicals. Back Wash as often as needed
3. Deep Clean Filter Elements
4. Holds 4.5 lbs DE - No More
5. Replace Pressure Gauge #3

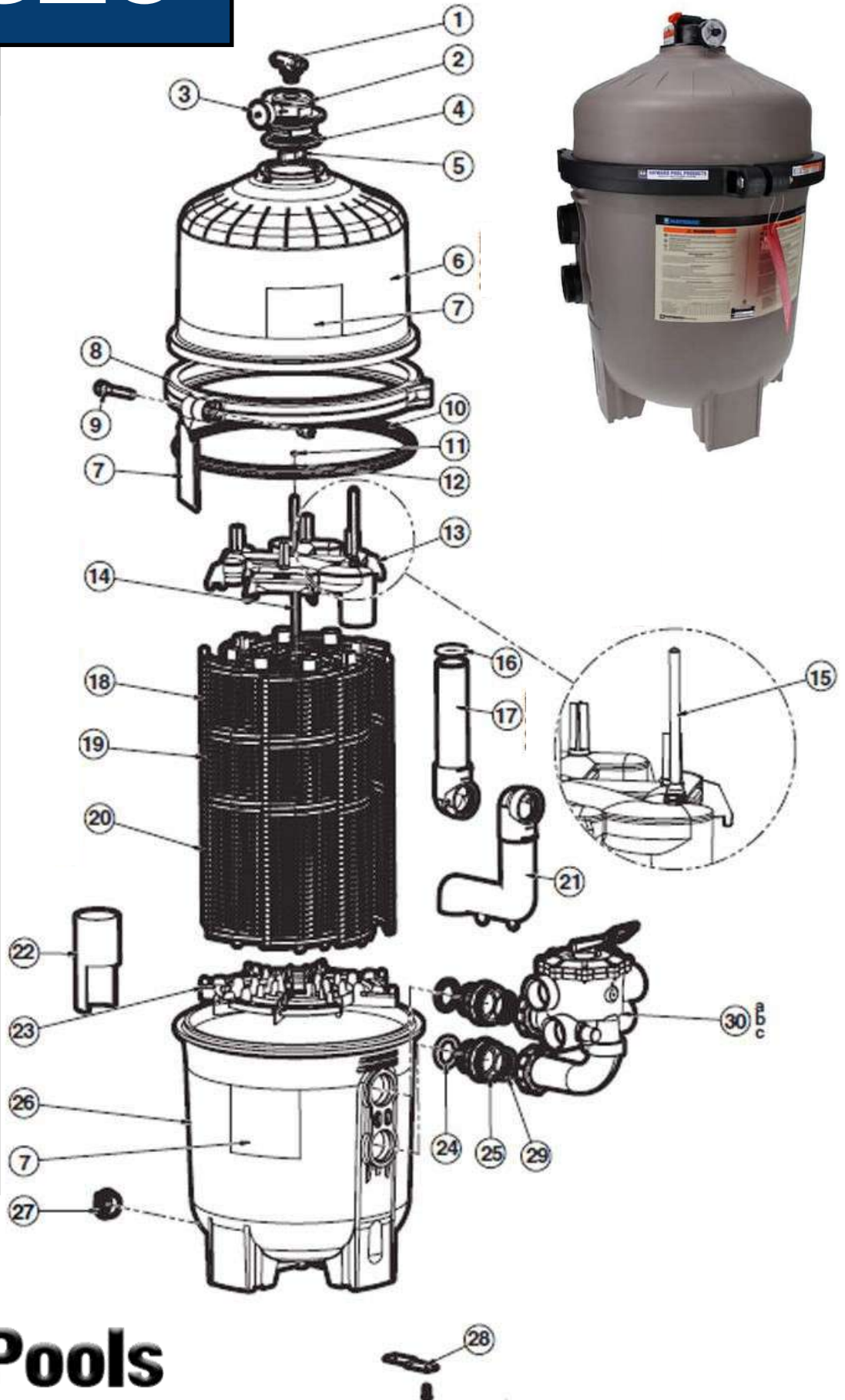
Filter Pressure is 0 psi

Possible Causes

1. If no water returning to pool, pump is pulling air
2. If water returning to pool, pressure gauge broken

Solutions

1. See Pump breakdown for solutions
2. Replace Pressure Gauge #3



Flohr Pools

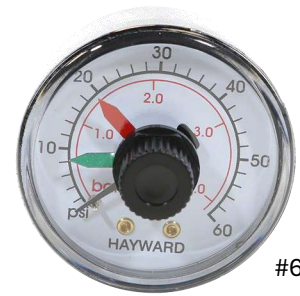
Ref. #	FPI #	Description	Req
1	6249	Manual Air Relief Valve w/ O-Ring	1
2	6287	Manual Air Relief Assembly	1
3	6267	Pressure Gauge	1
4	6189	O-Ring Kit (Set of 2)	1
5	6248	Manual Air Relief Valve Nut	
6	n/a	Filter Head with Clamp (DE3620)	1
7	n/a	Label	1
8	6136	Clamp System	1
9	6133	Clamp Bolt and Nut	1
10	7521	Metal Reinforced Seal	1
11	6243	Retainer Nut, 5/16" - 18	1
12	6211	Washer, 5/16" (2 Required)	2
13	6266	Top Collector Manifold w/ Air Relief Assembly	1
14	6242	Retainer Rod	1
15	7532	Flex Air Relief Assembly	1
16	6191	Outlet O-Ring	1
17	6246	Outlet Elbow Assembly with O-Ring	1
18	n/a	Filter Element Cluster Assembly	1
19	6273	Filter Element	7
20	6272	Filter Element - Short	1
21	6247	Inlet Elbow	1
22	n/a	Element Spacer (DE2420 ONLY)	N/A
23	6245	Filter Element Locator	1
24	6289	Bulkhead O-Ring (2 Required)	2
25	6291	Bulkhead Fitting (2 Required)	2
26	n/a	Filter Body w/ Clamp	1
27	1016	1.5" Drain Plug w/ O-Ring	1
28	n/a	Strap Kit: 2 Straps, 2 Screws (Optional)	N/A
29	5907	Valve/Union O-Ring	2
30	6186	DE3620 Multiport (Has It's Parts Page)	1

How to order parts from Flohr Pools:

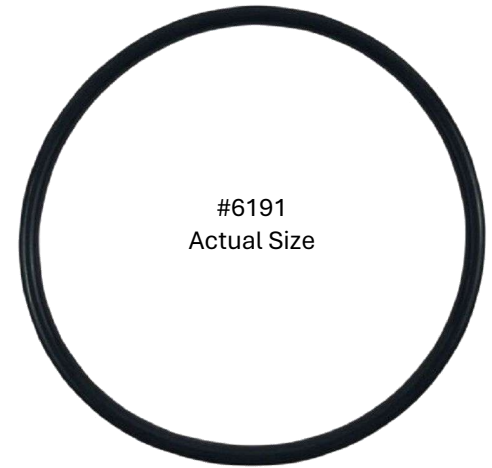
- Determine needed part using the diagram and chart
- Use the Flohr Pools Number (FPI #) at Flohr Pools to see if in-stock (likely is)
- If part doesn't have FPI. #, ask salesperson availability to order

TIPS

- Don't Run the filter for more than a minute at a time without DE powder
- Inspect Element Assembly at least once-a-year for tears and ware
- Maintain proper chemical balance to prolong filter longevity
- Lubricate O-Rings and replace when damaged



#6267



All Grids Sold Separately



#1016



#6186